

OWNERS:

Bing Copeland, shaper (Semi retired in 1974).....	1959.....	2011
The Late Rick Stoner (1937 - 1976).....	1959.....	1960
Production by Larry Gordon & Mike Eaton.....	1974.....	2000
Production by Matt Calvani.....	2000.....	2011

AS:

'Bing & Rick'.....	started 1959.....	closed 1960
'Bing'.....	started 1960.....	2011

FACTORIES:

Bing Copeland parents garage.....	summer 1959.....	x Oct 1959
Hermosa Beach, California (1338 Strand).....	s Oct 1959.....	x 1971
Hermosa Beach, California (725 Cypress Ave.).....	s 1972.....	x 1972
San Diego, California.....	s 1971.....	x 1971
Production turned over to Gordon & Smith.....	s 1971.....	x 1984
Out of production, few made.....	s 1984.....	x 1989
Production turned over to Mike Eaton.....	s 1989.....	x 2000
Redondo Beach, California.....	s 2000.....	x 2008
Gardena, California.....	s 2008.....	x 2010
Production turned over to Matt Calvani.....	s 2000.....	x 2010
Encinitas, California.....	s 2010.....	2011

MODELS:

- None under the Bing & Rick line.
- "Australian Foil" **Figure 1** (image replication) About 2,000 made. s 1968. x 1972
6'6", Guidance fins early, Unlimited fins later, down rail rounded pin tail. Designed by Keith Paul.
- "Australian 'V' Bottom" **Figure 2**, custom sizes, logo by Bob Dahlquest..... s 1968. x 1970
WAVE Set fins, super wide square tail V-bottom, numbers (1,383) to (3,486). About 1,000 were made.
- "Bonzer 360" **Figure 3**, logo by Bruce Thomas, 5'6" to 6'6", bonzer fin & tail. s 1972. d 1977
Shaped by Mike Eaton. Used the Bonzer fin, **Figure 53**
- "Classic", **Figure 4**, Not a model series, just a custom ordered board..... c 1997. 2011

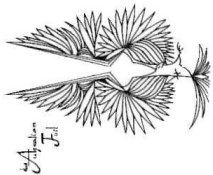


Figure 1

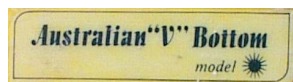


Figure 2



Figure 3



Figure 4

- "Classic Lightweight", Limited, Numbers: (1,212) & up..... s 1997. 2011
- "Classic Noserider", Limited, **Figure 5**. c 1989. 2011
Numbers: BN-1 & up (until 1991)
- "David Nuuhiwa Lightweight" **Figure 6**, Logo by Bing..... s 1967. x 1968
Figure 7 logo by Bob Dahlquist..... s 1968. x 1968
9'6" to 10'0". WAVE Set box, numbers (7,954) to ? Fin see **Figure 45**, about 3,500 made total.
- "David Nuuhiwa Noserider", **Figure 8**, 9'4" to 10'3", single fin, square or pin tail..... s 1966. d 1967
Numbers: (5,315) to (8,045), Logo by Bob Dahlquest. Colored foam T-band stringers. The rare pin tails had a red foam five band stringer.



Figure 5



Figure 6



Figure 7



Figure 8

- "David Nuuhiwa Noserider" re-surfaced..... d 1999. d 1999
- "Dick Brewer"..... c 1969. c 1969
- "Donald Takayama", **Figure 9**, logo by Bing & Don Takayama, 9'4", triple stringer..... s 1965. d 1967
Shaped by D. Takayama & Dick Mobley]

“Foil” 6'10" to 7'2", **Figure 10**, logo by Bob Dahlquest. d 1964. d 1969
 Numbers: (3-3,810) to ?, wave set fins
 “Glass Slipper” **Figure 11**, 6'2", single guidance box fin, diamond tail, numbers (6,852) to ? . . . s 1970. d 1970
 Square noses were made for the East Coast, USA. Fin see **Figure 46**
 “Cold Standard” **Figure 12**, 9'0" to 10'0", single fin, diamond tail. c 2005. 2011



Figure 9



Figure 10

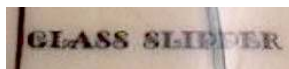


Figure 11



Figure 12

“Good Karma” **Figure 13**, 6'10" to 8'3", single fin, round tail, logo by Bob Dahlquest. s 1968. d 1969
 Numbers (3,895) to (8,105), wave set fins
 “Katamacave” Longboard, single through the deck fin box, 2'-3' concave tail. s 1965. c 1965
 “(the) Lotus”, **Figure 14**, logo by Bob Dahlquest, board designed by Dick Brewer. s 1968. d 1968
 The earlier versions had a slightly larger logo while the later had “the” added in front of “Lotus”
 Numbers (10,013) to (10,632). First few were down rail, nose to tail, soon changed to upturned at nose transitioning to
 down at tail. These models had a complex stringer of black glue line / redwood / black foam / balsa / black foam /
 redwood / black glue line, single fin (**Figure 49**), pin tail
 Retros: c 2000's. 2011
 “Maui Foil” **Figure 15**, 7'5", kick nose, soft diamond tail. s 1969. d 1970
 Logo by Bob Dahlquest. Numbers: (6,144)
 Retros: c 2000's. 2011
 “Nuuhiwa Lightweight”, Numbers: (1,076) to (7,954). d 1962. d 1968
 9'6" to 9'10", colored T-band, single fin, square tail
 “Pipeliners” (Brewer) **Figure 16**, logo by Bing & Dick. Numbers (18) to (8,371). s 1967. 1968
 9'4" to 10'0", 60/40 rails, pin or square tail, redwood center stringer with offset blue or white foam T-bands, volan
 cloth, clear with some custom color, single fin (**Figure 48**).
 Resurfaced: Fin: **Figure 56**. c 1999. 2011



Figure 13



Figure 14

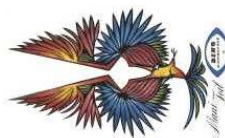


Figure 15



Figure 16

“Pipeliners East” (Brewer). c 1967. c 1967
 “Pipeliners Island Gun” (Brewer) **Figure 17**, 9'10" to 10'0", full gun. c 1967. c 1967
 Early models: 4.4 lb. density foam, 2x10oz volan top and bottom, 32 lbs.
 Late models: 3.0lb density foam, 2x10oz deck, 10oz bottom, 19 lbs.
 “Pipeliners Island Semi” (Brewer), **Figure 18**, fin see **Figure 44**. s 1967. c 1967
 9'8" to 10'2", high nose, dropped rails
 “Pintail Lightweight” **Figure 19**, logo by Bob D., board designed by Brewer. About 1,700 made. s 1968. x 1969
 8'0" to 9'4", single Waveset fin, pin tail, numbers: 1,537 to 10,617, some also included a “Hawaii Model” sticker,
Figure 20.

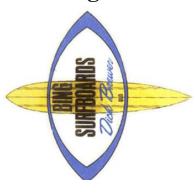


Figure 17



Figure 18



Figure 19



Figure 20

“Silver Spoon”. c 2002. 2011
 “Slalom” **Figure 21**, logo by Bob Dahlquest. s 1969. c 1970's
 7'4" x 17 1/4", Guidance fin system
 “Vincent” **Figure 22**, logo by Bob Dahlquest, 6'6" to 8'6", single fin, square tail. s 1970. c 1970's



Figure 21



Figure 22

BLANKS:

Balsa	1950's.....	2011
Note: Only one a year.....	mid 2000's.....	2011
Walker foam.....	1959.....	1962
Re-started.....	2005.....	2006
Clark foam.....	1962.....	2005
Isophthalic foam.....	1964.....	1964
lightweight.....	1972.....	2006
Rogers, concurrent.....	1970.....	1971
Styrofoam / epoxy: About 10 made, no logos or numbers used.....	1959.....	1959

STRINGERS:

3 lam.....	1964.....	2011
5 lam.....	1963.....	2011
T-band.....	1961.....	2011
Colored foam, Walker & Clark.....	1960.....	1967
Curved.....	1962.....	1960's

SHAPERS:

Bing Copeland.....	1961.....	1970
Alan Nelson.....	1964.....	1969
Benji Rabanal.....	1968.....	1969
Carl Ekstrom.....	1960.....	1967
Dan Bendikson.....	1962.....	1972
Dick Brewer.....	1967.....	1968
Dick Mobley.....	1960.....	1964
Donald Takayama.....	1965.....	1966
George Lanning.....	1968.....	1969
John Lessing.....	1968.....	1970
John Mobley.....	1963.....	1965
Johnny Rice.....	1960.....	1961
Keith Paul.....	1968.....	1970
Kenny Tilton.....	1966.....	1966
Matt Calvani.....	2003.....	2011
Mike Eaton.....	1965.....	2001
Steve Schlickemeyer.....	1970.....	1974
Wayne Land.....	1963.....	1969

SHAPES:

Air jets, Photo Surfer V12#2p29.....	1971.....	1971
One 27" wide for James Arness who, at 6'7" and 270 pounds, needed something big.....	1968.....	1968

NOSE BLOCKS: 30°, very few..... 1964..... end unk

TAIL:

Wide.....	1971.....	1971
Wood blocks.....	1964.....	2011
Swallow.....	1973.....	1977
Diamond.....	1974.....	1977

LOGOS:

The first 10 boards did not have logos.....	s 1959.....	x 1959
'Surfboards - Bing & Rick' Figure 23 , logo by Bing Copeland & Rick Stoner.....	s 1959.....	x 1960
'Surfboards - Bing' Figure 24 , logo by Stu Linder.....	s 1960.....	x 1961
'Bing - Surfboards' with eye, Figure 25 , logo by Bing Copeland.....	s 1961.....	2011



Figure 23

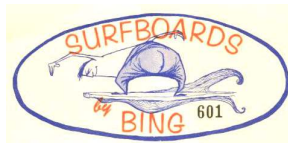


Figure 24



Figure 25

'Bing - Surfboards' **Figure 26**. s 1961. c 1980's
 'Bing - Surfboards' **Figure 27**, with double eye. s 1962. 2011
 'Bing' Variations such as in **Figure 28**. d 1964. d 1964
 School kids used scissors and library paste to create this logo, reflecting a (atomic) pre-occupation of the times.



Figure 26



Figure 27



Figure 28

'Bing' **Figure 29**, logo by Bing. Some would cover entire bottom of a board. s 1966. 2011
 Variations: Center of 'B' removed & 'I' not dotted **Figure 30**, few used. s 1966. c 1970's
 'Bing' **Figure 31**. s 1968. x 1976



Figure 29

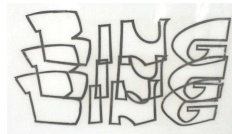


Figure 30



Figure 31

'Bing Surfboards' **Figure 32** Designed by Bob Dahlquest for custom boards. s 1968. x 1970
 'Bing' **Figure 33**, Custom drawn in resin on the board, no more than 2 made. s 1963. x 1967
 'Bing' **Figure 34** Designed by Bruce Thomas, variations such as **Figure 35**. s 1970. 2011
 About 50 boards with this logo had a colored dot on the nose to distinguish between
 west (blue) and east (red) coast models. s 1972. x 1972



Figure 32



Figure 33



Figure 34

'Bing' **Figure 36**. s 1989. 2011
 'Bing' **Figure 37**, logo by Bing Copeland. s 2000. 2011



Figure 35



Figure 36



Figure 37

GLASSING:

Volan, flat weave. 1964. 1964
 matt deck, neoprene insert. 1971. 1971
 Color Flo. 1972. 1972
 2 x 10 oz. 1964. 1964

RESIN:

Generic. 1964. 1964
 Dion. 1972. 1972

FINS:

Glassed on glass (clear, color), wood, wood inlay.	1964.	1964
Twin.	1970.	2011
Woodenglass (box).	1971.	1971
Guidance System.	1969.	1971
black box, 3" shorter.	1971.	end unk
Star	1979.	1979
TRAF	1964.	1967
Unlimited.	1974.	2011
W.A.V.E. Set	1967.	1973

FIN GALLERY:



Figure 38
1960-balsa board



Figure 39
1961 guns



Figure 40
c1963



Figure 41
1963-1960's

Fins:



Figure 42
c1964



Figure 43
c1965



Figure 44
1967-1968



Figure 45
c1967-c1968

Fins:



Figure 46
c1967-c1970



Figure 47
c1967



Figure 48
c1967-c1968



Figure 49
c1968

Fins:



Figure 50
1960's



Figure 51
1960's



Figure 52
1960's-1970's



Figure 53
1973-present

Fins:



Figure 54
c1978-now



Figure 55
c1998-now

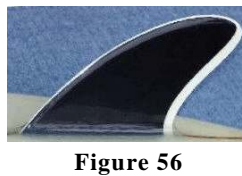


Figure 56
1999-now



Figure 57
c2005-now

COLOR:

Abstract on foam (acid splash).....	1959.....	1961
Airbrushed balsa rails.....	1971.....	end unk
Flower bands.....	1966.....	2011
Pinlines:.....	1965.....	2011
Tom Curtis.....	1973.....	1974
Dave Hollander.....	1971.....	1974
Tints.....	1973.....	end unk

NUMBERING: [Reliability = 10] Some may also have the individual retail shop number.

No numbers used..... 1959..... 1961

Note: Serial numbers for models were not added to production numbers.

1 to 674	1961
675 to 1,962.....	1962
1,963 to 3,054.....	1963
3,055 to 3,958.....	1964
3,959 to 4,834.....	1965
4,834 to 6,734.....	1966
6,735 to 8,970.....	1967
8,971 to 10,794.....	1968

Note: 5 digits were too many, started over @ 1,000.

1,000 to 2,518.....	1968
2,519 to 5,494.....	1969
5,495 to 7,491.....	1970
7,492 to 8,411.....	1971

Note: Production was turned over to Gordon &

Smith, no specific numbering sequence was used.

Random 1971..... 1984

Note: Production re-started by Eaton

“BN” or “B” + prod #.....	1985.....	1990
1,001 to 1,013.....	1991	
1,014 to 1,050.....	1992	
1,051 to 1,068.....	1993	
1,069 to 1,136.....	1994	
1,137 to 1,180.....	1995	
1,181 to 1,207.....	1996	
1,208 to 1,371.....	1997	
1,372 to 1,473.....	1998	
1,474 to 1,570.....	1999	
1,571 to 1,714.....	2000	
1,175 to 1,783.....	2001	
1,784 to 1,802.....	2002	

Note: production turned over to Matt Calvani

WEIGHTS:

30-40 lbs.. (1962)

We would like to express our thanks to Bing Copeland for his contributions to this profile.

Other contributors: Mike Eaton

Publications: “Bing Surfboards - Fifty Years of Craftsmanship and Innovation”

Editor: Andy Anderson