

Dale B. Woodard

(Updated: 4/2010)

OWNER: Dale B. Woodard, shaper

FACTORY: Cardiff, California. c 1960's. c 1960's

MODELS: None reported to date.

BLANKS: Reportedly frequently used recycled blanks, resulting in odd color patterns to hide scars.

STRINGERS: Redwood, T-bands. 1960's. 1960's

OTHER SHAPER: John E. Thurston (**Figure 3**). 1960's. 1960's

LOGOS:

 'Dale B. Woodard - Custom Boards - Cardiff' **Figure 1**. c 1960's. c 1960's

 'Dale B. Woodard - Surfboards' **Figure 2**. c 1960's. c 1960's

SIGNATURES: 'John E. Thurston' (**Figure 3**), laminate. 1960's. 1960's



Figure 1



Figure 2

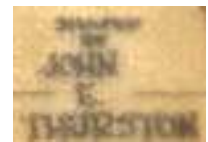


Figure 3

NUMBERING: [Reliability = 0]

(9) 1960

Contributor: Dani Kollin

If you have any information on this brand or the people involved, please contact the [SnB Editor](#)