

OWNER: Eddie Talbot

FACTORY: Hermosa Beach, California. started 1972. 2009

Subcontracted for: McTavish

MODELS:

“Kingfish” **Figure 1**, 6'10" to 7'6", twin w/sm trailer, stinger swallow, about 500 made to date. . . . s 1997. 2009

“Spyder” (Dennis), short, single, twin or tri fin, custom tails. s 1975. x 1978



Figure 1

BLANKS:

Balsa: about 10 made. 1972. 2004

Foam:

Clark: 1972. 2006

Walker: 1972. 2009

STRINGERS:

Balsa, spruce, mahogany or foam. 1972. 1980's

Basswood or redwood. 199's. 2009

Others of eras. 1972. 2009

NOSE & TAIL BLOCKS:

High density foam. 1980's. 1990's

Various woods. 1990's. 2009

OTHER SHAPERS:

Bob Moore. 1970's. 1980's

Denis Jarvis. 1980's. 1980's

Ed Sakal. 1970's. 1980's

Pat Ryan. 1970's. 2009

Ralph Haughtby. 1970's. 1980's

LOGOS:

'E.T. - Surfboards' **Figure 2**. s 1972. rare 2009

'E.T. Surfboards' **Figure 3**, outline E.T., clear background. s 1972. x 1980

'E.T. Surf - Hermosa Beach, Ca' **Figure 4**. s 1980. 2009



Figure 2



Figure 3



Figure 4

'E.T.' **Figure 5**. s 1980. x 1990

'E.T. Surfboards' **Figure 6** (#0282) Various multiple combinations. s 2000. x 1980

'E.T. Surfboards' **Figure 7**, solid E.T., white background. s 2000. x 2000

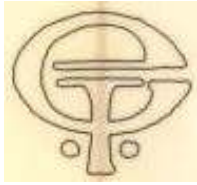


Figure 5



Figure 6



Figure 7

OTHER LAMINATES: 'Just Longboards' Surf Shop logo, few used. s 1992. x 1995

FINS:

 Glass on wood or foam. 1972. 1970's

 Glass on and or removable of customers choice. 1972. 2009

COLOR & ARTWORK:

 Resin abstract, pin lines, air brushing or India ink on rice paper. 1972. 2009

 India ink on hot coat. 1980's. 2009

NUMBERING: [Reliability = 0]

 (0282). 1982

We would like to express our thanks to Eddie Talbot & Mike Ackerman for their contributions to this profile.
 Other contributor: [SurfCrazy](#)
 Editor: Andy Anderson