

AS:

'T.P.' started 1967. 2010
 Any of his contract shaping was done under this label.
 'Fluid Drive' started 1976. 2010
 'Epic' started 1987. 2010

OWNER: Tim Phares, only shaper

FACTORIES:

North Hollywood, California. s 1967. x 1980
 Van Nuys, California (14819 1/2 Oxnard Street). s 1980. x 1993
 Agoura Hill, California. s 1993. x 1994
 Santa Monica, California. s 1994. c 2010

MODELS: None.

SHAPES:

All custom or one-off, no computerized or machine pre-shaping 1968. 2010
 High performance to cruisers, long, short, guns and all in between Re-creations of classics as far back as the 60's.

LOGOS, T.P.:

'T.P. - Time Phares' s 1967. c 1960's
 'T.P.' **Figure 1** c 1968. c 2010
 'T.P.' **Figure 2** c 1968. c 2010
 'T.P.' **Figure 3** c 1968. c 2010



Figure 1

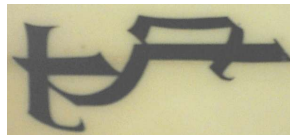


Figure 2



Figure 3

'T.P. - Time Phares - Shapes' s 1974. c 1970's
 'Tim Phares - Shaping Surf Craft' **Figure 4** c 2009. 2010

LOGOS, Fluid Drive:

'Fluid Drive' **Figure 5** c 1976. c 1986
 Image only, **Figure 6** c 1976. c 1986



Figure 4



Figure 5



Figure 6

'FD' **Figure 7** c 1976. d 1987
 'Fluid Drive' **Figure 8** c 1980's. c 1986
 'Fluid Drive' **Figure 9** c 1980's. c 1986



Figure 7



Figure 8



Figure 9

'FD' **Figure 10** c 1990's. 2010
 'Fluid Drive - Surf Systems - 1976' **Figure 11** c 2009. 2010

LOGOS, Epic: 'Epic' **Figure 12** c 1987. 2010



Figure 10



Figure 11



Figure 12

GLASSING:

Fluid Drive: 2 x 6 oz deck, 6 oz bottom free lap, Hexcel, Sylmar 249-A.....	1976.	2010
Staggered 4 deck & 6 bottom.	1987.	1987

COLOR & ART, Fluid Drive: Airbrushing. 1976. 2010

FINISH, Fluid Drive: Gloss & polished..... 1976. 2010

NUMBERING: None reported to date.

Note: Tim has shaped over 50,430 boards to date.

We would like to express our thanks to Tim Phares for his contributions to this profile.

Other contributors: Fred Stengl

Editor: Andy Anderson