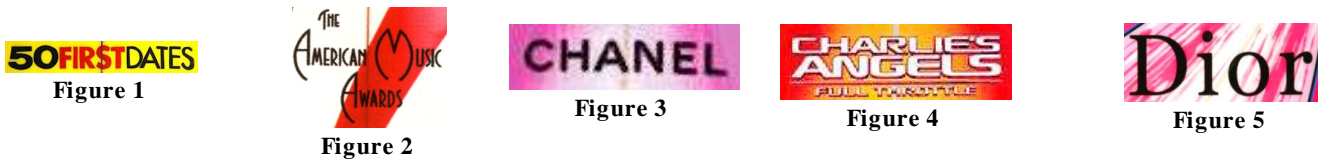


OWNER: Clark R. Riedel

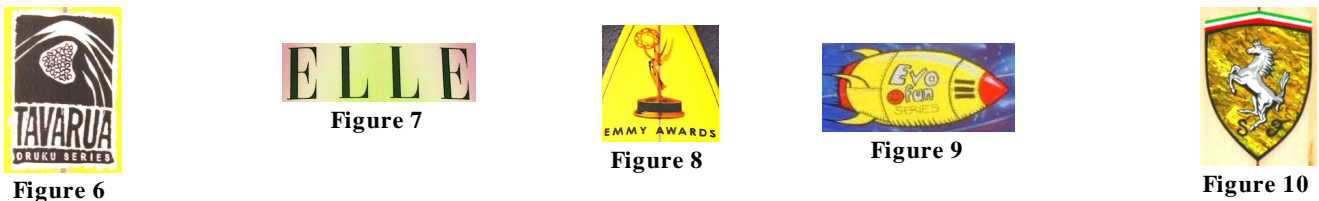
FACTORY: ([Website](#)) Del Mar, California. . . . . started 1999. . . . . 2011

MODELS: Note: Many of these models are promotional.

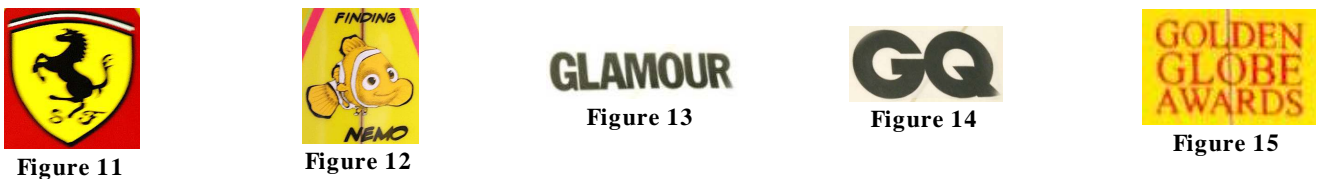
- “50 First Dates” **Figure 1**, 6'6" to 7'10", tri fins, round pin tail, 7 made. . . . . s 2005. . . . . x 2005
- “Academy Oscars Award” 7'2", tri fin, diamond tail, 12 made. . . . . s 2004. . . . . x 2004
- “American Music Awards” **Figure 2**, 12 made. . . . . s 1999. . . . . x 1999
- “Challenger Stradale” 6'6", tri fin, diamond tail, 6 made. . . . . s 2005. . . . . x 2005
- “Chanel” **Figure 3**. . . . . s 2007. . . . . 2011
- “Charlie’s Angels” **Figure 4**, 7'5", tri fin, diamond tail, 6 made. . . . . s 2002. . . . . 2011
- “Dior” **Figure 5**, 6'0" to 6'9", tri fin, pin, round pin or diamond tail, 24 made. . . . . s 2002. . . . . x 2004



- “Druku Series” **Figure 6**, 6'3" to 9'2", 2+1 fins, round pin or diamond tail, 35 made. . . . . s 2001. . . . . x 2002
  - “Elle” **Figure 7**, 6'3", tri fin, round pin tail, 4 made. . . . . s 2003. . . . . x 2003
  - “Emmy’s Awards” **Figure 8**, 6'2" to 8'6", tri fin, squash, diamond or pin, 10 made. . . . . s 2003. . . . . x 2003
  - “Evo fun Series” **Figure 9**, 6'2" double ender, 2+1 fins, round pin tail, 25 made. . . . . s 2001. . . . . x 2005
  - “Ferrari Alaia Balsa Agave” **Figure 10**, 9'0", 3 abalone fins, pin tail, 2 made. . . . . s 2005. . . . . x 2005
- Logo is abalone inlay



- “Ferrari Carbon Fiber” **Figure 11**, 6'2", tri fin, round tail, 2 made. . . . . s 2005. . . . . x 2005
  - “Finding Nemo” **Figure 12**, 7'2", tri fins, pintail, 1 made. . . . . s 2005. . . . . x 2005
  - “Glamour” **Figure 13**, 6'2", tri fin, round pin tail, 2 made. . . . . s 2003. . . . . x 2003
  - “GQ” **Figure 14**, 6'6", tri fin, round pin tail, 3 made. . . . . s 2002. . . . . x 2002
  - “Golden Globe Awards” **Figure 15** or **Figure 16**. . . . . s 2004. . . . . x 2004
- 5'2" to 9'8", tri fin, pin or diamond tail, 65 made



- “Gotham” **Figure 17**, custom for Jason Oliver Nixon, 4 made. . . . . s 1999. . . . . x 1999
- “Hugh Hefner” **Figure 18**, 6'2" to 8'0", tri fin, pin or diamond tail, 8 made. . . . . s 2005. . . . . x 2005
- “Louis Vuitton” **Figure 19**, 6'2", tri fin, round tail, 15 made. . . . . s 2004. . . . . x 2004
- “Louis Vuitton Cup” **Figure 20**, 6'2", 2+1 fins, round pin tail, 6 made. . . . . s 2005. . . . . x 2005



“Lucky” <b>Figure 21</b> , 6'2", tri fin, round pin tail, 4 made. ....	s 2003. ....	x 2003
“Maxim” <b>Figure 22</b> , custom for Maxim bachelor pad, Bloomingdale, NY, 8 made. ....	s 2003. ....	x 2003
“Missioni” <b>Figure 23</b> , 6'9", tri fin, diamond tail, 12 made. ....	s 2002. ....	x 2004
“Nickelodean” <b>Figure 24</b> , 6'2", tri fin, pin tail, 12 made. ....	s 2005. ....	x 2005
“Olo” 12 wood gun, listed in Vanity Fair for \$50,000, balsa, agave & red cedar. ....	s 2007. ....	2011
“Playboy” <b>Figure 25</b> , 6'2", 2+1 fins, round pin tail, 3 made. ....	s 2004. ....	x 2004



Figure 21



Figure 22



Figure 23



Figure 24



Figure 25

“Power Ranger” See Evo Fun Series

“Spike” <b>Figure 26</b> , 6'2", tri fin, round pin tail, 21 made. ....	s 2005. ....	x 2005
“Sponge Bob Square Pants” <b>Figure 27</b> , 6'1", tri fins, diamond tail, 4 made. ....	s 2005. ....	x 2005
“Tavarua Series” <b>Figure 28</b> , 5'6" to 8'2", tri fin, pin or diamond tail, 60 made. ....	s 2001. ....	x 2002
“Testarossa Red Head” 6'9", tri fin, pin tail, red resin tints, 5 made. ....	s 2005. ....	x 2005
“Versace” <b>Figure 29</b> , 6'6", tri fin, diamond tail, 5 made. ....	s 2003. ....	x 2003
“Vogue” <b>Figure 30</b> , 6'2" to 7'2", tri fin, diamond tail, 6 made. ....	s 2003. ....	x 2004



Figure 26



Figure 27



Figure 28



Figure 29



Figure 30

“Wayne Lynch Evolution” <b>Figure 31</b> , 8'0", single fin, round pin tail, 10 made. ....	s 2001. ....	x 2002
“World Music Awards” <b>Figure 32</b> , 6'2" to 8'0", tri fin, rnd pin or squash, 18 made. ....	s 2005. ....	x 2005



Figure 31



Figure 32

BLANKS:

Balsa, Agave & Red Cedar: Post chambered in house. ....	1999. ....	2011
Clark foam. ....	1999. ....	2011
US foam. ....	2006. ....	2011

OTHER SHAPERS:

Brian Bulkley. ....	1999. ....	2002
Jim Phillips. ....	2001. ....	2011
Mike Slingerland. ....	2001. ....	2011
Wayne Lynch <b>Figure 33</b> . ....	1999. ....	2003
House shaper logo <b>Figure 34</b> . ....	2003. ....	2011



Figure 33



Figure 34

SHAPES: 40 Wayne Lynch master plugs, KKL pre-shaped, finished in-house shapers. .... 2001. .... 2011

LOGOS:

'Evolution' **Figure 35**. . . . . s 1999. . . . .2011  
 Image only, **Figure 36**. . . . . s 1999. . . . .2011



**Figure 35**



**Figure 36**

COLOR & ARTWORK: Air brushing on hot coat or foam, hand brushing. . . . .1999. . . . .2011  
 GLASSING: S cloth, weight & layers depends on length of board. . . . .1999. . . . .2011  
 RESIN: Polyurethane. . . . .1999. . . . .2011  
 FINS: Glass-on, LokBox. . . . .1999. . . . .2011  
 FINISH: Gloss & polish. . . . .1999. . . . .2011  
 NUMBERING: [Reliability = 10]. . . . .1999. . . . .2011

These boards dated (4 digit year) and include the plug # and production number for that year

We would like to express our thanks to Clark Riedel for his contributions to this profile.  
 Editor: Andy Anderson