

Hawaiian Spirit

(Updated: 8/2011)

FACTORY: (Hawaii)..... c 1980's..... c 1980's
 MODELS: None reported to date.
 BLANKS:
 Wood: None reported to date.
 Foam: Source unknown..... 1980's..... 1980's
 SHAPER: G. Garduque. 1980's..... 1980's
 TAILS: Wide swallow. 1980's..... 1980's
 LOGO: 'Hawaiian Spirit - surfboards' **Figure 1.** c 1980's..... c 1980's

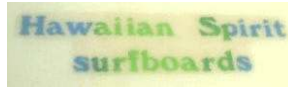


Figure 1

FINS: Single..... 1980's..... 1980's
 NUMBERING: None reported to date.

If you have any information on this brand or the people involved, please contact the [SnB Editor](#) Andy Anderson.