

Nelson

(Updated: 1/2008)

OWNER: Alan Nelson , only shaper

FACTORY: La Jolla, California. started 1954. closed 1959

Note: One of Alan’s cohorts would cruise the alleys, find an open garage and simply set up shop. When challenged, he would say “Ed said it was ok”, ending, of course, in eviction. At the last location he simply removed a for rent sign and was not challenged for several years until the bulldozers came to level the property for redevelopment.

MODELS: None

BLANKS: Balsa only, solid 3 ¼" Ecuadorian, some had scarfed nose. 1954. 1959

STRINGERS: ¼" redwood, up to 3. 1954. 1959

SHAPES: Kicked tails. 1956. 1959

LOGOS:

‘Nelson’ typed on a piece of paper near the tail, few done s 1954. x 1954

‘NELSON’ Block letter rubber stamp, **Figure 1**. s 1954. x 1959

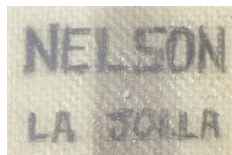


Figure 1

GLASSING:

Free lap Volan (some later boards may have Silene). 1956. 1959

1 x 13 oz. 1956. 1957

1 x 20 oz, few made. 1957. 1957

2 x 10 oz. 1957. 1959

RESIN: Thalco isophthalic. 1954. 1959

FINS:

All glassed on, some beaded. 1954. 1959

Solid wood fins, no laminations, spruce, mahogany, redwood (few) or pine (salvaged from milk crates)

Hollow glass, about 3 made. 1954. 1959

COLOR:

Random colored thread under glass, few made. 1954. 1959

FINISH:

Unpolished gloss, no masking tape used. 1954. 1958

Unpolished gloss with bead. 1958. 1959

NUMBERING: None reported to date.

We would like to express our thanks to Alan Nelson for his contributions to this profile.