

Rip Curl

(Updated: 7/2010)

OWNERS: Doug Warbrick & Brian Singer, founders

FACTORY:

Torquay, Australia.	started 1967.	2003
San Clemente, California.	c 2000's.	2010
Some boards subcontracted to Larmont, Africa.	1990's.	2010

SHAPERS:

Al Colk.	1975.	1985
Dan Van Zanten, Wayne Lynch models.	1980's.	1990's
Don Allcroft (Figure 13).	1976.	1970's
Hammish Graham.	1988.	1980's
Michael Andrews.	1990's.	2003
Michael Anthony.	1985.	1985
Wayne Lynch.	1990's.	1990s

TAILS: Swallow, double wings. 1980's. 1984

LOGOS:

'Rip Curl - Surfboards - Wayne Lynch Design' Figure 1	c 1969.	d 1984
'Rip Curl' Figure 2	c 1969.	c 1985
'Rip Curl' Figure 3	c 1974.	c 1980's
'Rip Curl' Figure 4	c 1990's.	c 2003



Figure 1



Figure 2



Figure 3



Figure 4

Image, Figure 5 (Need better image).	d 1999.	c 2003
'Rip Curl' Figure 6 (Need better image).	c 1990's.	c 2000's
Image only, Figure 7 (Need better image).	c 1990's.	c 2000's



Figure 5



Figure 6

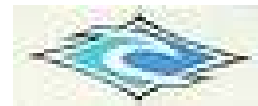


Figure 7

'Rip Curl (rest unknown)' Figure 8	c 1990's.	c 2000's
'R - Rip Curl Surfboards' Figure 10	c 1990's.	c 2000's
'Rip Curl' Figure 9	c 1990's.	c 2000's



Figure 8



Figure 9



Figure 10

'Rip Curl Surfboards - Wayne Lynch Design' Figure 11	c 1990's.	c 2000's
'Rip Curl' Figure 12	c 1990's.	c 2000's

SIGNATURES:

'Don Allcroft' Figure 13	1976.	1970's
---	---------------	--------



Figure 11



Figure 12

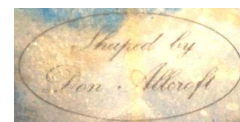


Figure 13

NUMBERING: [Reliability = 0]
(1276)..... 1985

Contributors: Cory Fowler, manager & Dave O'Donnell

If you have any information on this brand or the people involved, please contact the [SnB Editor](#), Andy Anderson.