

FACTORY: Venice, Ca (340 Washington Blvd.) c 1931. c 1950's
Produced boards for Tom Blake. s 1932. x 1939

MODELS:

“Hawaiian Paddle Board” without the Blake name. s 1931. early 1950's
Grade A plywood, same as used in the construction of the Howard Hughs’ “Spruce Goose”.

“No. 1 Paddle Board” **Figure 1**. s 1932. x 1939
Mens: 14' x 19" x 4 1/2", 55 pounds
Girls: 12' x 19" x 4 1/2", 50 pounds
Childrens: 10' x 18", x 4 1/2", 40 pounds
Made of Philippine Mahogany and fastened with brass screws.

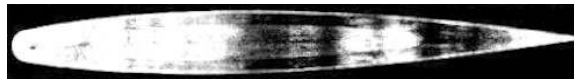


Figure 1

“No. 2 Streamlined Life Guard Board” 13'6", **Figure 2**. s 1932. x 1939
Made of Philippine Mahogany and fastened with brass screws. Rails were fastened with ‘anchor head’
(**Figure 8**) nails. Designed as a life guard board, it also proved to work well as a tandem board.



Figure 2

“No. 3 Beach Boy” **Figure 3**. s 1932. x 1939
12' x 23" x 4 1/2", square tail, mahogany planking, brass screws, 80 pounds. Used for both single and tandem
surfing.



Figure 3

“No. 4 Surfing Board” **Figure 4**. s 1932. x 1939
12' x 21" x 4 1/4", square tail, mahogany side rails, planked with 3 ply Weldwood water proof plywood,
fastened with brass screws, 50 pounds.

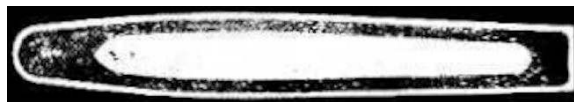


Figure 4

“No. 5 Surfing Board” **Figure 5**. s 1932. x 1939
12' x 21" x 4 1/4", square tail, mahogany side rails, planked with 3 ply Weldwood water proof plywood,
fastened with brass screws, 55 pounds.



Figure 5

“No. 6 Surf and Paddle Board” **Figure 6**. s 1932. x 1939

12' x 21" x 4 1/4", mahogany side rails, planked with 3 ply Weldwood water proof plywood, fastened with brass screws, 45 pounds.



Figure 6

“No. 7 Water Polo Board” **Figure 7**. s 1932. x 1939
 12'0" x 21" x 4 1/4", 45 lbs, mahogany side rails, planked with 3 ply Weldwood water proof plywood & fastened with brass screws. This board was double ended, designed to be used in either direction.



Figure 7

BLANKS: Hollow

Quarter-sawn paneled mahogany, brass screws, anchor head nails on rails, **Figure 8**. 1932. 1939

Note: The anchor image is raised above the surface of the nail.

Plywood, weldwood marine. 1935. 1950's

Brass vent/drain plugs. 1935. early 1950's

Galvanized metal: did not hold up well in the marine environment. early 1950's. 1950's



Figure 8

FINS: All square tail models had fins. 1936. closing

FINISH: Multiple coats of marine spar varnish. 1931. closing

We would like to express our thanks to Gary Lynch for his contributions to this profile.

If you have any information on this brand or the people involved, please contact the [SnB Editor](#)